



Sunrise Technologies is the premier provider of Microsoft Dynamics AX for the apparel and footwear industries. Sunrise Technologies combines industry expertise with specific functionality available in Microsoft Dynamics AX to help apparel and footwear companies meet their unique business requirements.



The Sunrise **Apparel & Footwear Template for Microsoft Dynamics AX** is a Certified for Microsoft Dynamics product, which signifies that the solution has met Microsoft Corporation's highest standard for partner-developed software. The Apparel & Footwear template is an integrated and comprehensive solution for both full-package sourcing and vertical manufacturing companies.

- Certified by Microsoft as a **Certified for Microsoft Dynamics AX** product
- Written in X++ code using the Microsoft Dynamics AX development environment
- Uses existing objects wherever possible, extending them as needed
- Introduces new objects that fully integrate to the existing objects
- Follows **Microsoft Dynamics AX** best practices on user interface, inheritance, etc.

Offers a comprehensive set of industry specific functions including the following:

- Color, size, and configuration masters & scales
- Season codes
- Item status code
- Automated UPC code generation
- Intelligent bill of materials & route management
- Master Production Order
- Sales order categories
- Sales cancellation log with reason codes
- Sales order hold with hold codes
- Sales restrictions
- Customer ship-to and mark-for addresses
- Configurable Item Attributes per Item Group Sales order matrix
- Purchase order matrix
- Bill of materials matrix
- Master production order matrix
- Transfer order matrix

Item dimension scales (color, size, and configuration) can be maintained for various product lines or seasons. This allows you to quickly apply a range of values (color, size, and configuration) to an item (style). Values can be assigned sequence numbers to arrange them on the form in a logical order. For example, sizes will appear as S, M, and L instead of in alphabetical order.

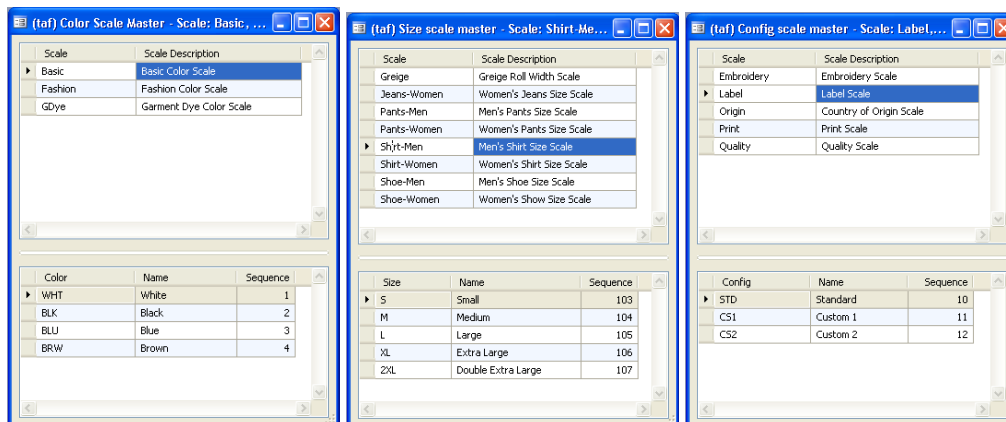
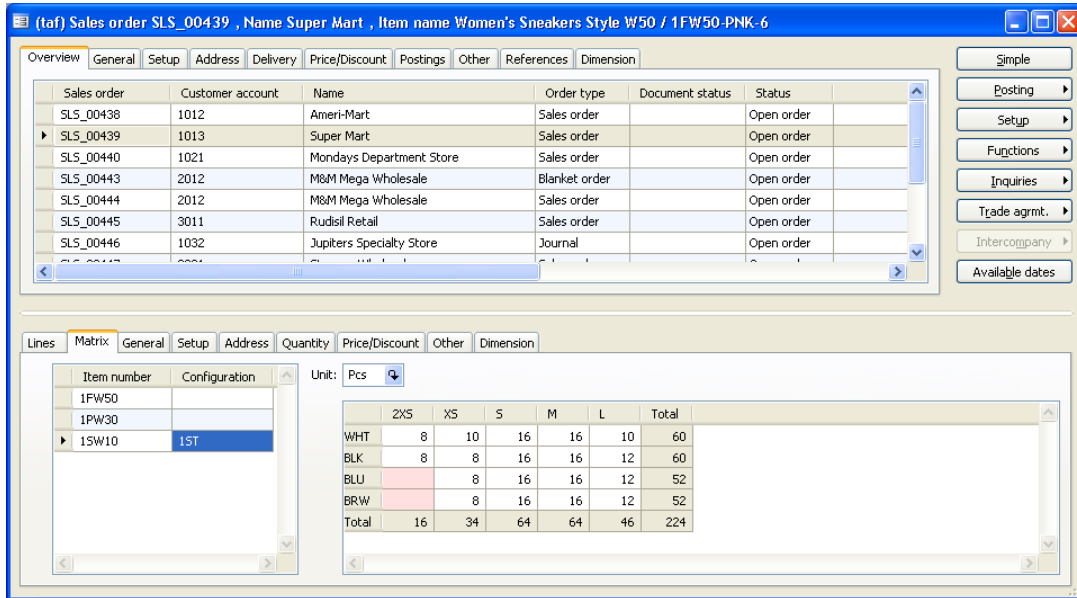


Figure 1: Color, size, and configuration scales

The intuitive sales order matrix allows fast and easy order entry. Invalid item combinations are disabled and indicated by cell shading. The matrix information is automatically carried over to the “Lines” tab for an alternate view of the order lines.



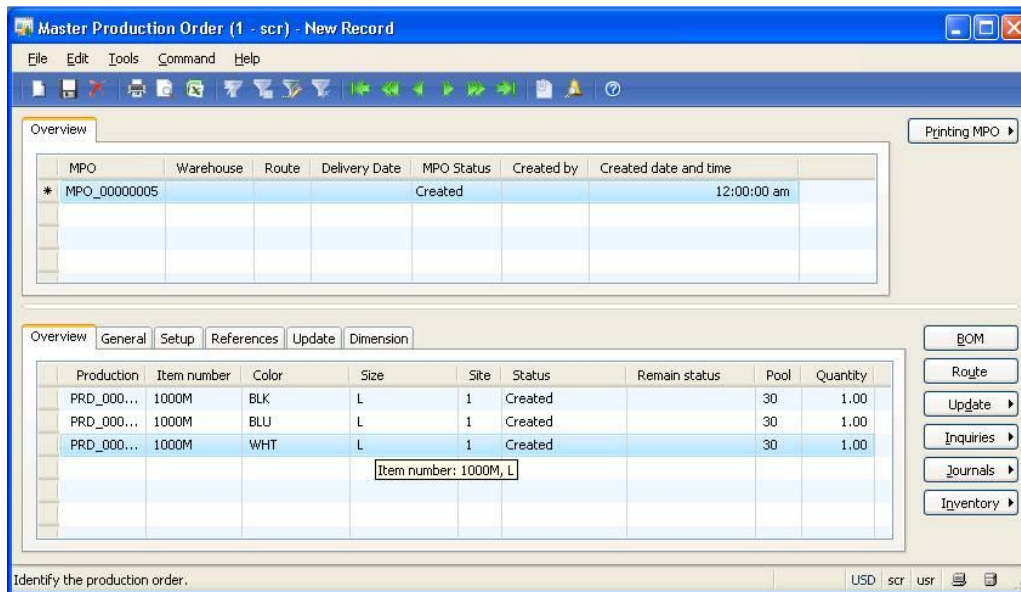
Sales order	Customer account	Name	Order type	Document status	Status
SLS_00438	1012	Ameri-Mart	Sales order		Open order
SLS_00439	1013	Super Mart	Sales order		Open order
SLS_00440	1021	Mondays Department Store	Sales order		Open order
SLS_00443	2012	M&M Mega Wholesale	Blanket order		Open order
SLS_00444	2012	M&M Mega Wholesale	Sales order		Open order
SLS_00445	3011	Rudisil Retail	Sales order		Open order
SLS_00446	1032	Jupiters Specialty Store	Journal		Open order

Item number	Configuration	Unit
1FW50		Pcs
1PW30		
15W10	1ST	

	2XS	XS	S	M	L	Total
WHT	8	10	16	16	10	60
BLK	8	8	16	16	12	60
BLU	8	16	16	12	52	
BRW		8	16	16	12	52
Total	16	34	64	64	46	224

Figure 2: Sales order matrix

Sunrise Apparel & Footwear Template allows the user to create Master Production Orders (MPO), which allow you to assign multiple production orders to a single overriding master. The key benefit is the ability to assign varying style, color, size to a single production run. When an MPO is updated, all production orders assigned to the MPO are also updated and function as a group.



MPO	Warehouse	Route	Delivery Date	MPO Status	Created by	Created date and time
* MPO_00000005				Created		12:00:00 am

Production	Item number	Color	Size	Site	Status	Remain status	Pool	Quantity
PRD_000...	1000M	BLK	L	1	Created		30	1.00
PRD_000...	1000M	BLU	L	1	Created		30	1.00
PRD_000...	1000M	WHT	L	1	Created		30	1.00

Figure 3: Shows multiple production orders of varying SKUs assigned to a single MPO

Please contact Sunrise Technologies for further information: info@sunriseconsult.com